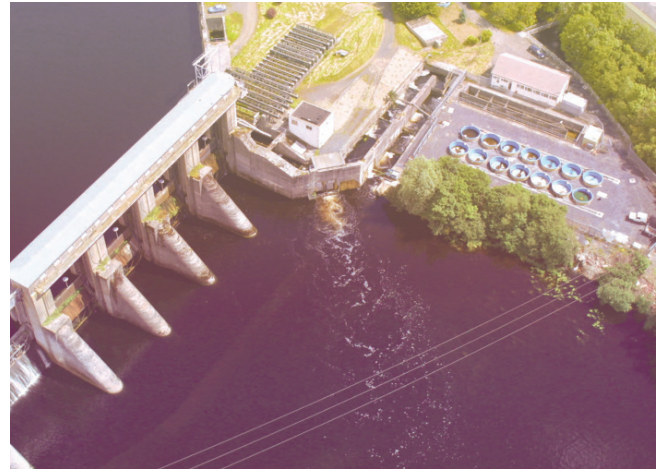



THE ARDNACRUSHA EXPERIENCE

Your class will work as a team to create a complete report as you explore the world famous Ardnacrusha power station. As part of **TEAM A**, your job is to write down some facts about the Station and the Powerplant. Work as a detective as you pass through the different sections of the station. Keep your eyes and ears peeled for the answers! Give it your best effort.


Good luck!





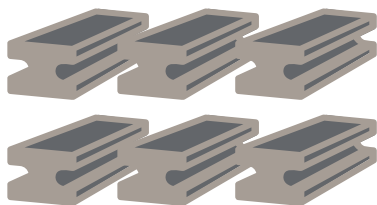
THE VISITOR CENTRE

'...with the flick of a switch,
Ireland was changed forever'



Have a look around and gather facts to make a timeline of the history of Ardnacrusha.

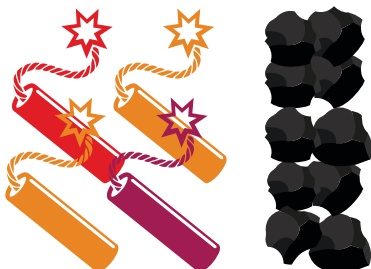
- When did the Irish Civil War end? _____
- When did the construction work start at Ardnacrusha? _____
- When was ESB established? _____
- When was the construction of Ardnacrusha completed? _____
- When were you born? _____



Numbers, Numbers, Numbers



- How much did it all cost? _____
- How many tower cranes were used? _____

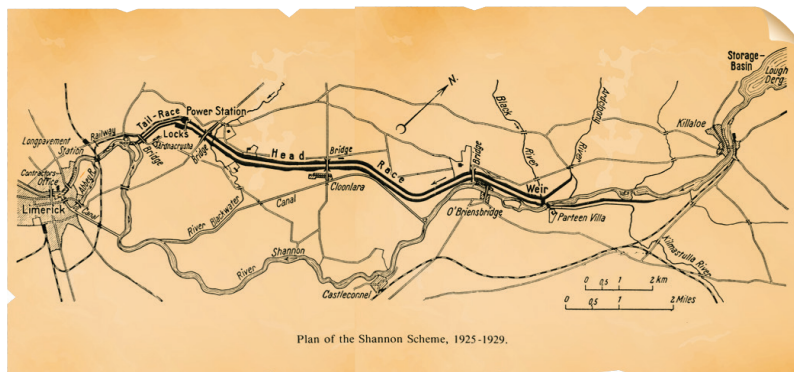


How many tons of materials went into the construction?

- Cement _____
- Coal _____
- Steel _____
- How much TNT was used? (Hint: Kablamo!) _____

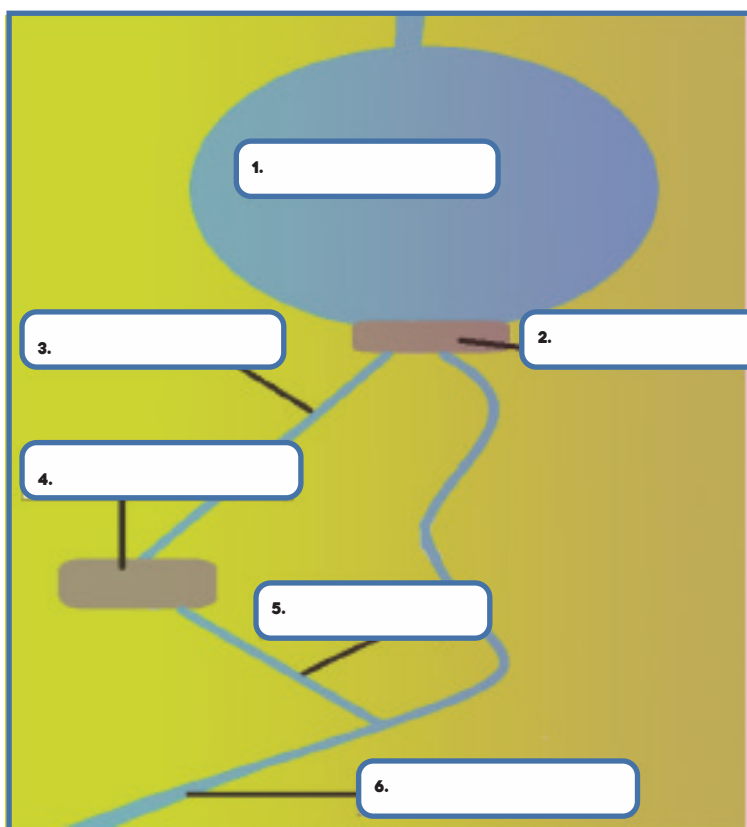
Fill in the missing information:

The Shannon is Ireland's longest river running _____ km from the Shannon Pot in County _____ to the Shannon Estuary near _____



OUT ON THE DAM

Are you ready to go see the Power Station? Make sure you have your hi-vis jacket and hard-hat on and hold on to your pencil and worksheet, it can get windy up there!



Look out along the canal leading to the dam. This is called the headrace canal. 12km away is Parteen Weir and behind it is Lough Derg. Once the water passes through Ardnacrusha it follows the tailrace canal (the lower outgoing canal) to rejoin the River Shannon.

Do your best and label 1- 6 of this map.

- Parteen Weir** **River Shannon**
- Tailrace** **Ardnacrusha Power Station**
- Headrace Canal** **Lough Derg**

(Hint: You're at No. 4)

Discuss with a partner in your class about why do you think rain is important to generating electricity at Ardnacrusha?

The water behind the dam is much higher than the water at the bottom.

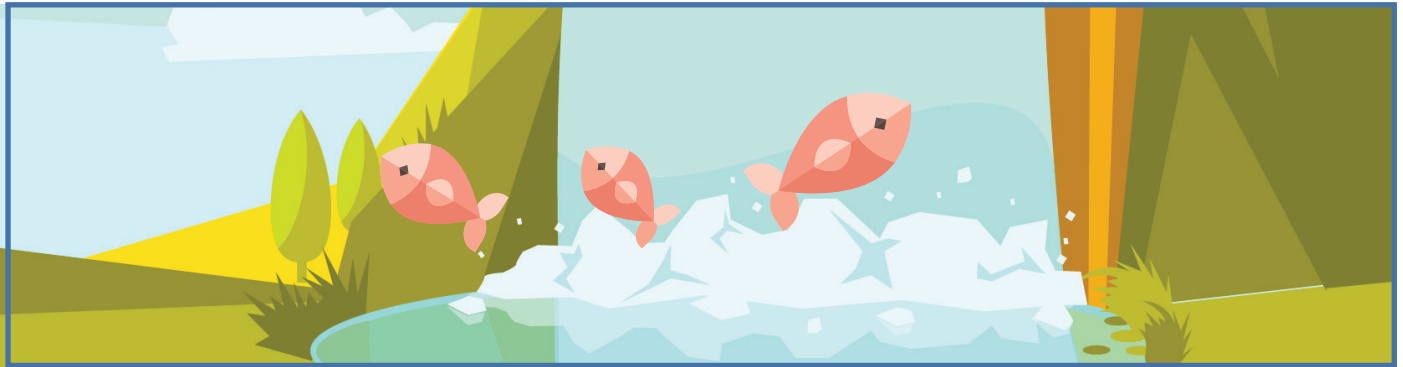
How is gravity important to generating electricity?



THE FISH PASS FREE TRANSPORT FOR SWIMMERS!

Why do the Salmon come back and migrate upstream?

Can you think of any other animals that migrate?



Question time! Write down the 2 most interesting things you learned today.

1.

2.

What was your favourite part of the tour and why?
